

# -APEX FOUNTAINS-

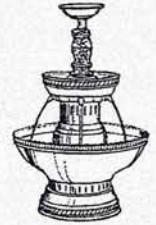
## ASSEMBLY AND OPERATING INSTRUCTIONS



**Step (1):** Remove and unwrap the fountain accessory from the top of the box.

**Step (2):** Locate the small bag of **spare** light bulbs and save for later use.

**Step (3):** Remove the fountain from the shipping box. ( Can be saved for future storage and transportation. )



**Step (4): IMPORTANT!** Check and remove any leftover packaging that may interfere with the normal operation of the fountain.

**Step (5):** Screw the top accessory ( *Floral Top Cup, Complete Statue, Complete Waterfall* ) onto the white main rod in the stabilizer bowl at the top of the fountain.

**Step (6):** Once the fountain is assembled, place it on a sturdy, level surface and pour a **minimum of six quarts for a three gallon, ten quarts for a five gallon, fourteen quarts for a seven gallon, and eighteen quarts for a ten gallon** of a pre-chilled beverage into the lower reservoir.



**Step (7):** Plug the fountain into an outlet. ( lights will come on automatically )

**Step (8):** Turn the control switch to "ON" and watch the beverage flow.

**Important Note: NEVER RUN FOUNTAIN DRY  
OR IMMERSE THE BASE IN WATER!!!**

## TROUBLESHOOTING

***Fountain does not circulate any beverage:***

- Check to make sure the intake holes at the bottom of the motor cover are at the bottom of the bowl. Fountain will typically require up to a minute for the beverage to flow properly. Turn the switch "OFF" for ten seconds and repeat until the beverage flows correctly.

***Beverage runs too slow or too fast:***

- Adjust the flow with a screwdriver through a 1/2" hole located in the upper part of the motor cover.

***Waterfall will not flow correctly:***

- To adjust, remove the waterfall cover and turn the screw located inside the waterfall main body. Also, to ensure proper flow through all the holes of the waterfall, be sure the fountain is on a sturdy, level surface.

***If you continue to experience problems call Customer Service at  
(800) 523-4586***

## HELPFUL HINTS

To chill a beverage, use ice in the main bowl, dry ice or acrylic ice cubes. **Always pre-cool the beverage** whenever possible to at least 36° Fahrenheit ( 2° Celsius ) before adding it to the fountain. When using carbonated beverages, pre-chill to at least 36° Fahrenheit ( 2° Celsius ) before adding it to the fountain. To avoid dilution, use acrylic ice cubes or frozen fruit pieces. Carbonation will dissipate after ten to twenty minutes of operation. It is advisable to add smaller quantities of mixtures to the fountain from time to time to maintain carbonation.



## DISASSEMBLY AND CLEANING INSTRUCTIONS

**Step (1):** Turn the fountain control switch to " OFF ".

**Step (2):** Empty the remaining beverage.

**Step (3):** Fill the lower reservoir with at least two to three gallons of **warm water** and three to four tablespoons of **baking soda**. Let circulate for five to ten minutes. This will help to break down the crystallized sugar allowing the fountain to be free of obstruction. Empty and repeat again.

**Step (4):** Remove the top accessory from the fountain.

**Step (5):** Unscrew the large stainless steel nut and remove the stabilizer bowl.

**Step (6):** Remove the large white gasket and spout bowl.

**Step (7):** Remove the motor cover ( may be two pieces ) to expose the pump.

**Step (8):** Clean the filter on the pump.

**Step (9): CLEAN ALL PARTS THOROUGHLY**, including the bowls, with a mild detergent. Do not use scouring pads or any type of abrasive. **This should be done after each use.**

**Step (10):** After cleaning the fountain and allowing it to dry completely, reassemble the fountain exactly the way it was taken apart and your fountain is ready for its next use.

## PUNCH RECIPES

For Ease In Serving And To Enhance A Buffet Table Or An Hors D'oeuvre Table, Nothing Measures Up To A Good Punch . If Properly Made, Punch Is As Tempting As Any Professionally Mixed Cocktail. Here Are Some Tested Punch Recipes That Will Make Your Party A Pleasant Occasion.

### WEDDING PUNCH

- ♦ 2 Fifths Southern Comfort or Bourbon
  - ♦ Juice of 12 Lemons ( 12 oz. )
  - ♦ 1 Cup Sugar
  - ♦ 1 Pint Very Strong Tea
  - ♦ 2 Bottles ( 56 oz. ) Club Soda
- Mix thoroughly. Pour over large piece of ice, adding soda last. Decorate with fruit.

### PARTY PUNCH

- ♦ 1 Fifth of Bourbon
  - ♦ 8 oz. Unsweetened Pineapple Juice
  - ♦ 8 oz. Unsweetened Grapefruit Juice
  - ♦ 4 oz. Fresh Lemon Juice
  - ♦ 2 Bottles of 7UP Or Sprite
- Pre - chill ingredients. Mix in bowl, adding 7UP or Sprite last. Decorate with fruit.

### HONOLULU COOLER

- ♦ 1 Gallon Pineapple Juice
  - ♦ 6 oz. Lime Juice
  - ♦ 2 Bottles Vodka
  - ♦ 2 Bottles 7UP
  - ♦ 1 Bottle Brandy
  - ♦ 1 Bottle Soda
- Add ice cubes to chill & decorate with fruit

### CHAMPAGNE PUNCH

- ♦ 1/3 Part Chablis
  - ♦ 1/3 Part Champagne
  - ♦ 1/3 Part Ginger Ale Or Sprite Chilled
- Ice Cubes To Chill

### NON - ALCOHOLIC PUNCH

- ♦ 2 Cans ( 12 oz. ) Frozen Orange Juice
  - ♦ 2 Cans ( 12 oz. ) Frozen Lemonade
  - ♦ 8 Bottles ( 12 oz. ) Plain Water
  - ♦ 2 Cups Grenadine
  - ♦ Juice of 3 Fresh lemons
  - ♦ 3 qt. Ginger Ale ( Chilled )
- Float orange slices on top. Add cherries.

### CALIFORNIA PUNCH

- ♦ 1/2 Gallon Orange Juice
  - ♦ 1/2 Gallon Pineapple Juice
  - ♦ 1/2 Gallon Lime Juice
  - ♦ 2 Bottles Ginger Ale
  - ♦ 2 Bottles Light Or Dark Rum
  - ♦ 1/2 LB. Sugar
- Float fresh sliced fruit in bowl. Add ice to chill.

### VODKA PUNCH

- ♦ 1 qt. Cranberry Juice Cocktail
  - ♦ 1 can ( 6 oz. ) Frozen Lemonade
  - ♦ 2 cups ( 16 oz. ) Vodka
  - ♦ 1 1/2 qt. ( 48 oz. ) 7UP Or Sprite Chilled
- Combine first 3 ingredients in punch bowl. Slowly add 7UP or Sprite. Add ice.

### BERRY CITRUS PUNCH

- ♦ 4 Gallons Mix Berry Punch
  - ♦ 1 Gallon Orange Juice
- Garnish with sliced fresh fruit, floating in fountain bowl. Add ice to chill.



**FOR YOUR PROTECTION, PLEASE READ AND OBSERVE  
THE FOLLOWING INSTRUCTIONS**

*THIS MERCHANDISE HAS BEEN THOROUGHLY INSPECTED AND CAREFULLY PACKED BEFORE LEAVING OUR MANUFACTURING FACILITY. THE TRANSPORTATION COMPANIES ASSUME ALL LIABILITY FROM THE TIME A SHIPMENT IS PICKED UP UNTIL IT IS DELIVERED TO THE CONSUMER.*

*IF IT IS FOUND THAT THE SHIPMENT HAS BEEN DAMAGED IN TRANSIT. DO NOT RETURN THE MERCHANDISE TO US, BUT FILE A CLAIM WITH THE CARRIER AT ONCE AS FOLLOWS:*

**CONCEALED LOSS OR DAMAGE:**

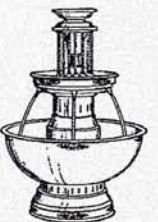
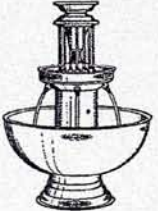
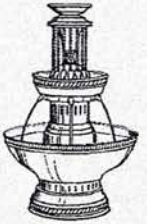
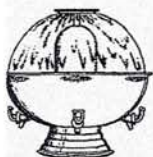
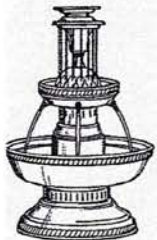
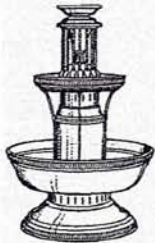
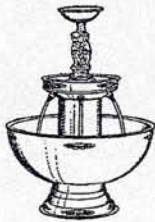
THIS IS LOSS OR DAMAGE THAT IS NOT APPARENT UNTIL THE MERCHANDISE HAS BEEN UNPACKED. THE CONTENTS MAY HAVE BEEN DAMAGED IN TRANSIT DUE TO ROUGH HANDLING. THIS CAN HAPPEN EVEN THOUGH THE CARTON MAY NOT SHOW ANY EXTERNAL DAMAGE, WHEN DAMAGE IS DISCOVERED AFTER UNPACKING, NOTIFY THE CARRIER WITHIN 48 HOURS BY PHONE AND IN WRITING. ASK THEM TO SEND AN AGENT TO FILL OUT AN INSPECTION REPORT. **SAVE THE CARTON (S) SO THEY CAN SEE THEM AND BE SURE TO NOTE IN THE REPORT ANY BLACK MARKS, CREASES, TARES, CRUSHED CORNERS OR ANY OTHER MARKS INDICATING ROUGH HANDLING.** BY FOLLOWING THESE INSTRUCTIONS CAREFULLY, WE GUARANTEE OUR FULL SUPPORT OF YOUR CLAIMS TO PROTECT YOU AGAINST LOSS FROM CONCEALED DAMAGE.

**VISIBLE LOSS OR DAMAGE:**

ANY EXTERNAL EVIDENCE OF LOSS OR DAMAGE MUST BE NOTED ON ALL COPIES OF THE FREIGHT BILL AND SIGNED BY THE DRIVER. FAILURE TO ADEQUATELY DESCRIBE SUCH EXTERNAL EVIDENCE OF LOSS OR DAMAGE MAY RESULT IN THE CARRIER REFUSING TO HONOR A DAMAGE OR LOSS CLAIM. THE CARRIER WILL SUPPLY THE FORM REQUIRED TO FILE SUCH A CLAIM.

***\*\* DO NOT RETURN MERCHANDISE TO US  
FILE YOUR CLAIM AS ABOVE \*\****

1140 North American Street Philadelphia, Pennsylvania 19123-1514  
Web: [www.ApexFountains.com](http://www.ApexFountains.com) — email: [Info@ApexFountains.com](mailto:Info@ApexFountains.com)





\*Flower Cup

Flow Hole - (6 or 4 holes)

\*Splash Cup

T/C Rod 4" (plastic)

\*Stabilizer Bowl

\*Spout Bowl

\*Spigot

Nut  $\frac{1}{2}$ "

Light Bulb ( $7\frac{1}{2}$  watts)

Flow Adjustment Screw (plastic)

Light Socket Top (on light rod)

Main Rod

Liquid Flow

Motor Bracket-A (Alum)

Connecting Nipple  $1\frac{1}{2}$ "

Z Bracket (Alum)

Pump Connector (plastic)

\*Motor Cover (in S/S 3 parts)

\*Main Bowl

Light Rod S/S

J-Tube (electric channel) (Alum)

Pump Filter

Intake Holes (in bottom of motor cover)

Decorative-Slats (in base and motor cover)

Light Socket Bottom (in base)

Light Bulb ( $7\frac{1}{2}$  watts)

\*Base

On-Off Switch For Pump

